

# Identifying and counting people living with treatable but not curable cancer

**Rachel White**

Joanna Pethick, Archie Macnair, Gregory Fallica, Jennifer Than and Jane Maher

September 2018



Public Health  
England

**MACMILLAN  
CANCER SUPPORT**

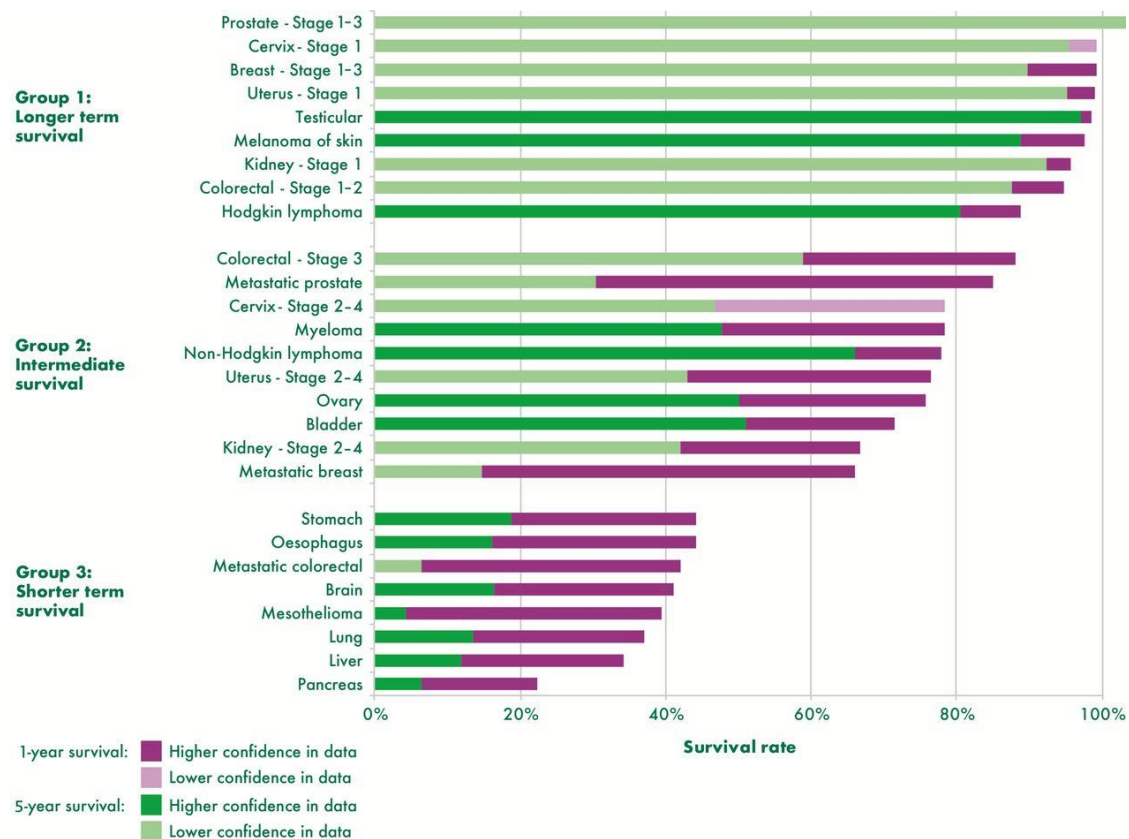
# Who are the people that experience treatable but not curable?

**A person living with cancer that is unlikely to be cured (eradicated completely) but can be treated to slow the progression of the cancer, prolong life and control symptoms**



- Isobel was diagnosed with breast cancer in 2010. In 2013 it spread to her bones. Isobel was given a prognosis of between two and twenty-four months.
- Isobel has had a very fragmented cancer journey where she was seen by multiple healthcare professionals. She felt she needed to be proactive to get the right treatment.

# Previous work to group the cancer population

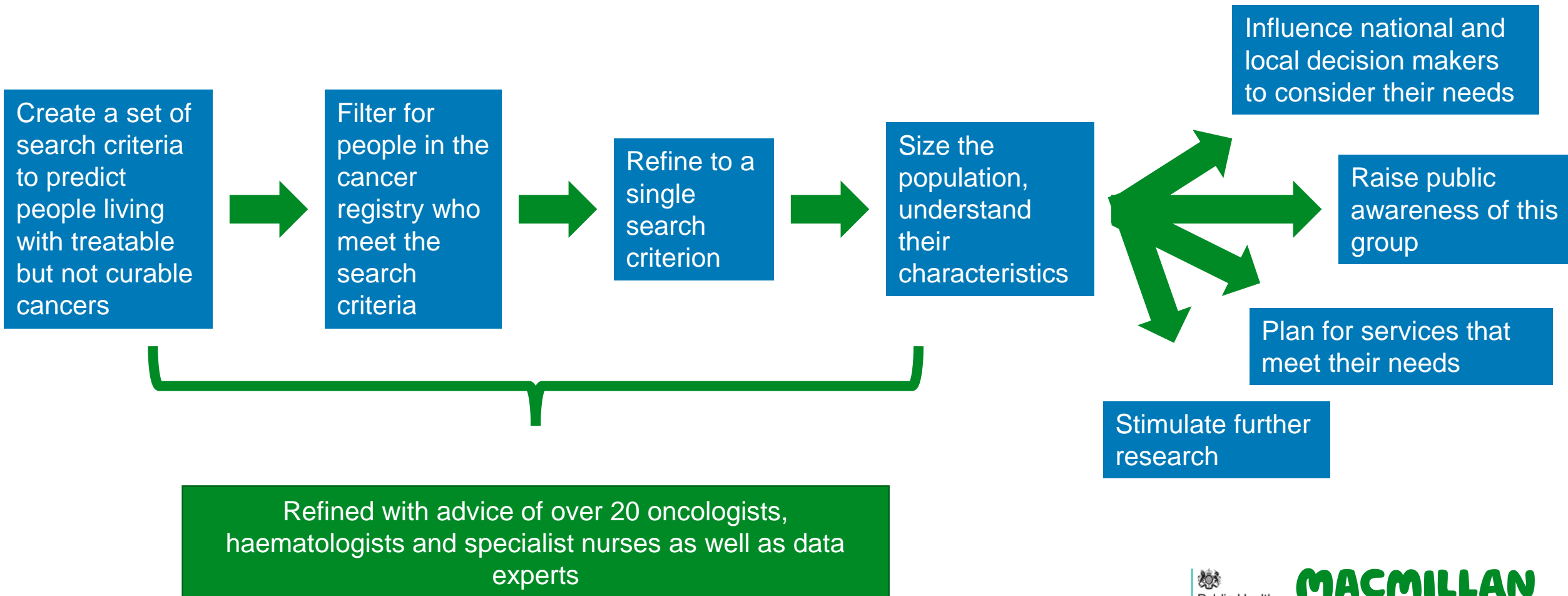


Cancer care pathway – estimating the number of people in the United Kingdom by cancer type 2010

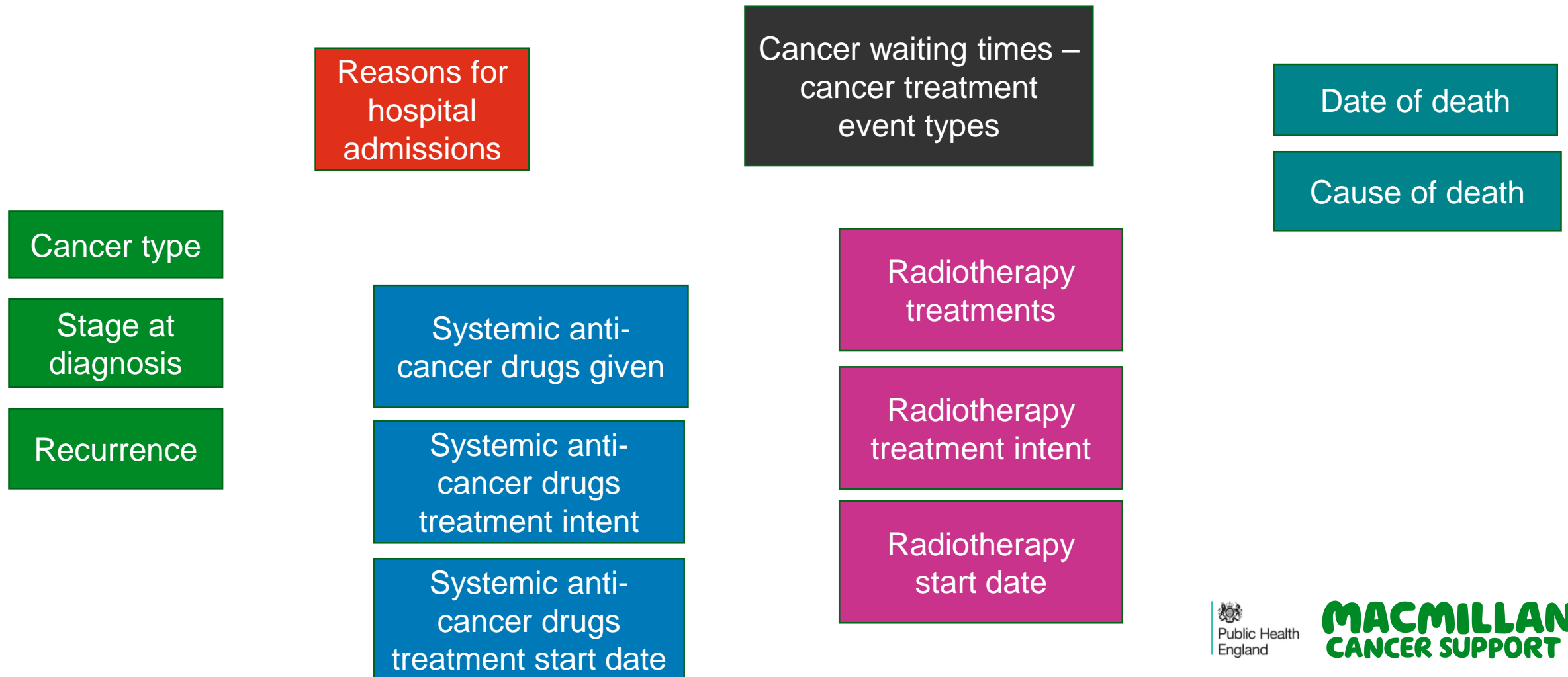


McConnell H, White R, Maher J. Categorising cancers to enable tailored care planning through a secondary analysis of cancer registration data in the UK. *BMJ Open* 2017;7:e016797. doi:10.1136/bmjopen-2017-016797  
 Yip K, et al. Using routinely collected data to stratify prostate cancer patients into phases of care in the UK: implications for resource allocation and cancer survivorship. *Br J Cancer*. 2015. 112(9): 1594-602

# Describing people living with treatable but not curable cancer to deliver services

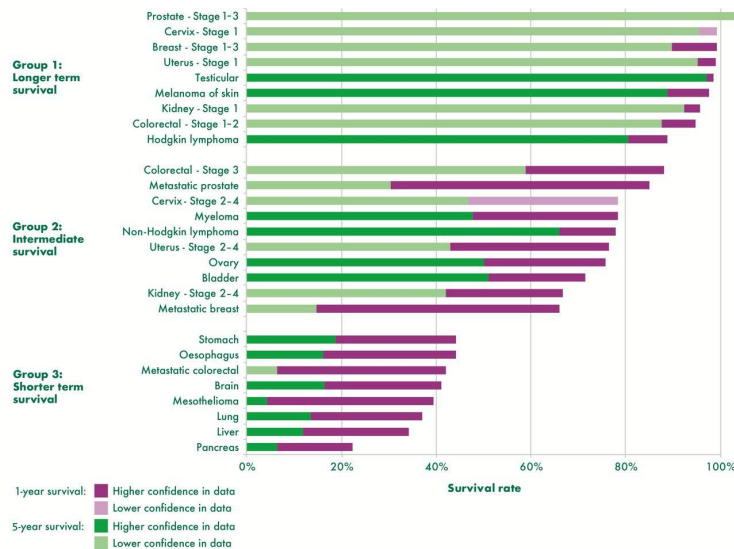


# Information we have in England to create a set of search criteria

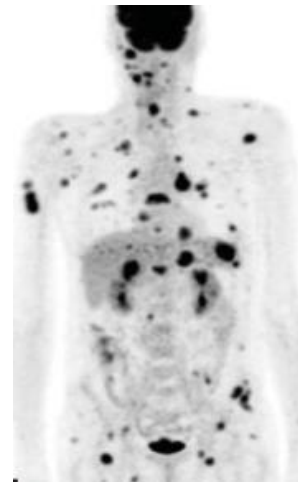


# Building and refining the search criteria

## The Three Cancer Groups framework\*



## Metastatic disease



## Treatment received



Set of cancers and stages at diagnosis that are likely to be treatable but not curable at the time of cancer diagnosis

Metastatic cancer recorded in HES, CWT, SACT

Specific chemotherapy and radiotherapy

Long term treatment

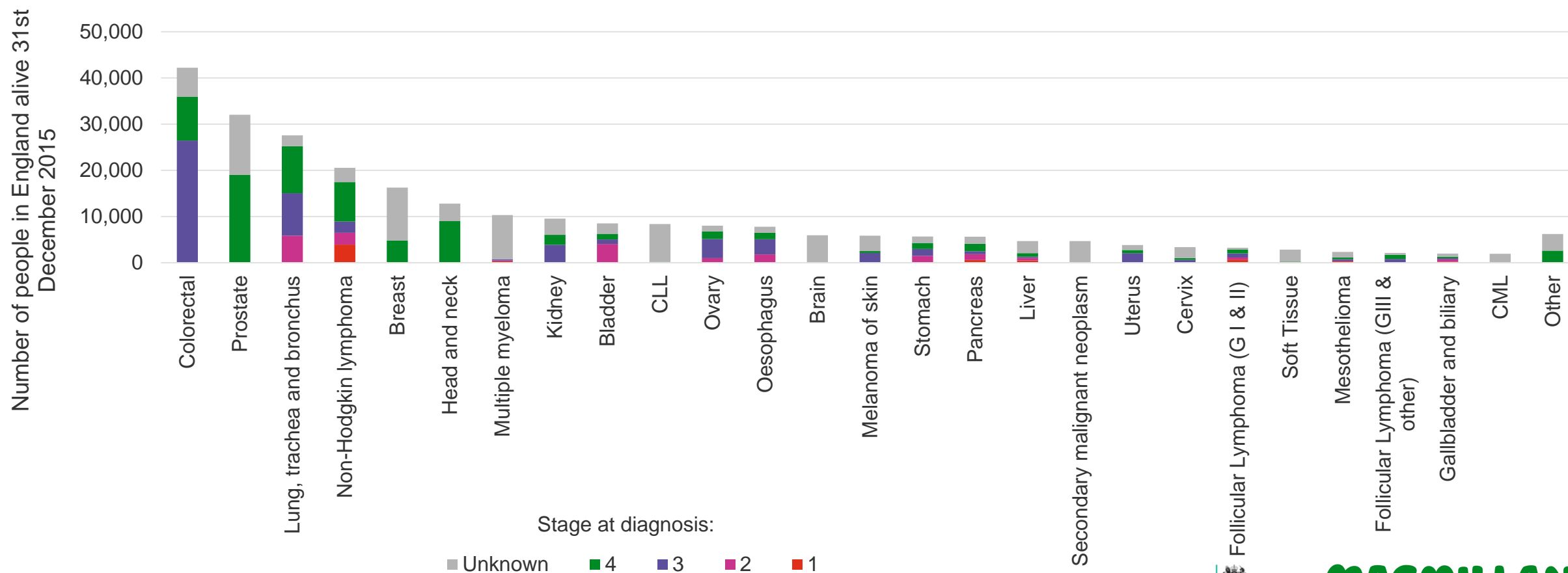
Palliative intent



\*McConnell H, White R, Maher J. Categorising cancers to enable tailored care planning through a secondary analysis of cancer registration data in the UK. *BMJ Open* 2017;7:e016797. doi:10.1136/bmjopen-2017-016797

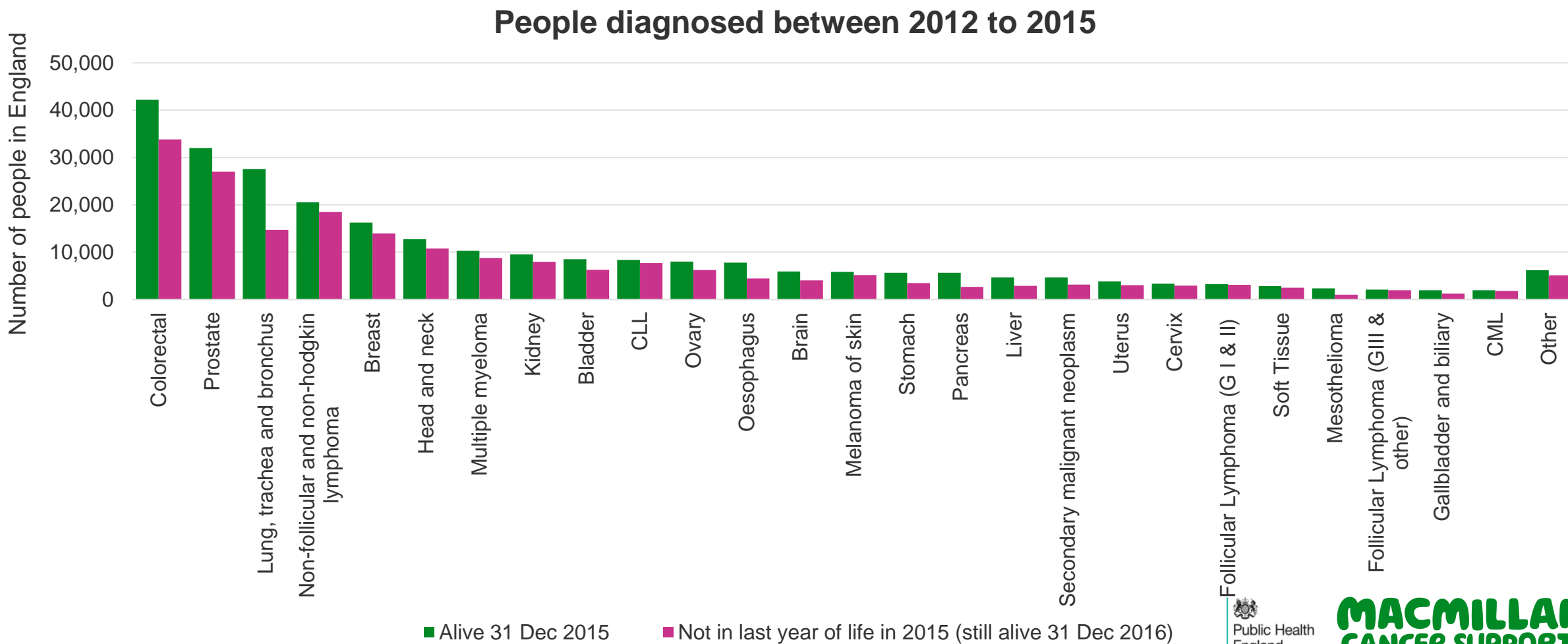
# 264,000 people with treatable but not curable at the time of cancer diagnosis

People diagnosed between 2012 and 2015 and alive in 2015 by tumour type and stage



Non-Hodgkin lymphoma includes Non-follicular lymphoma and non-Hodgkin lymphoma

# 204,000 people treatable but not curable at the time of diagnosis and not in the last year of life

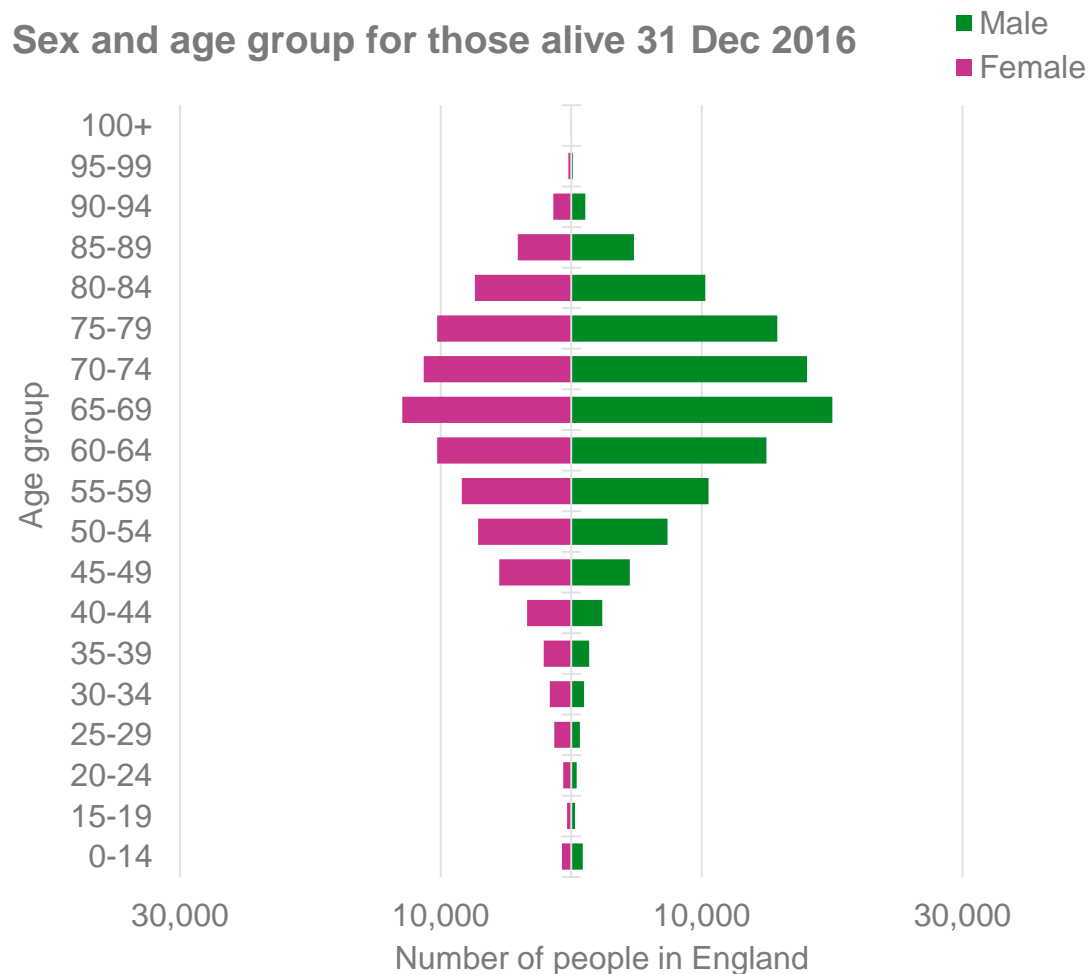




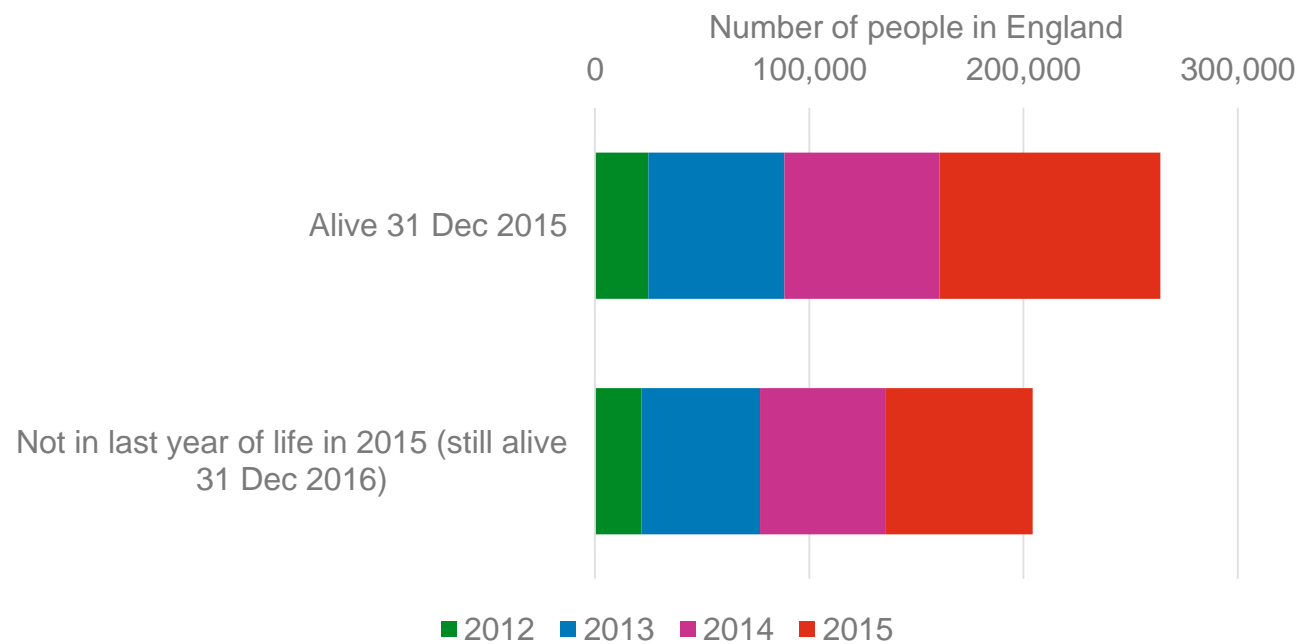
# Treatable but not curable at the time of diagnosis characteristics

People diagnosed between 2012 to 2015 in England

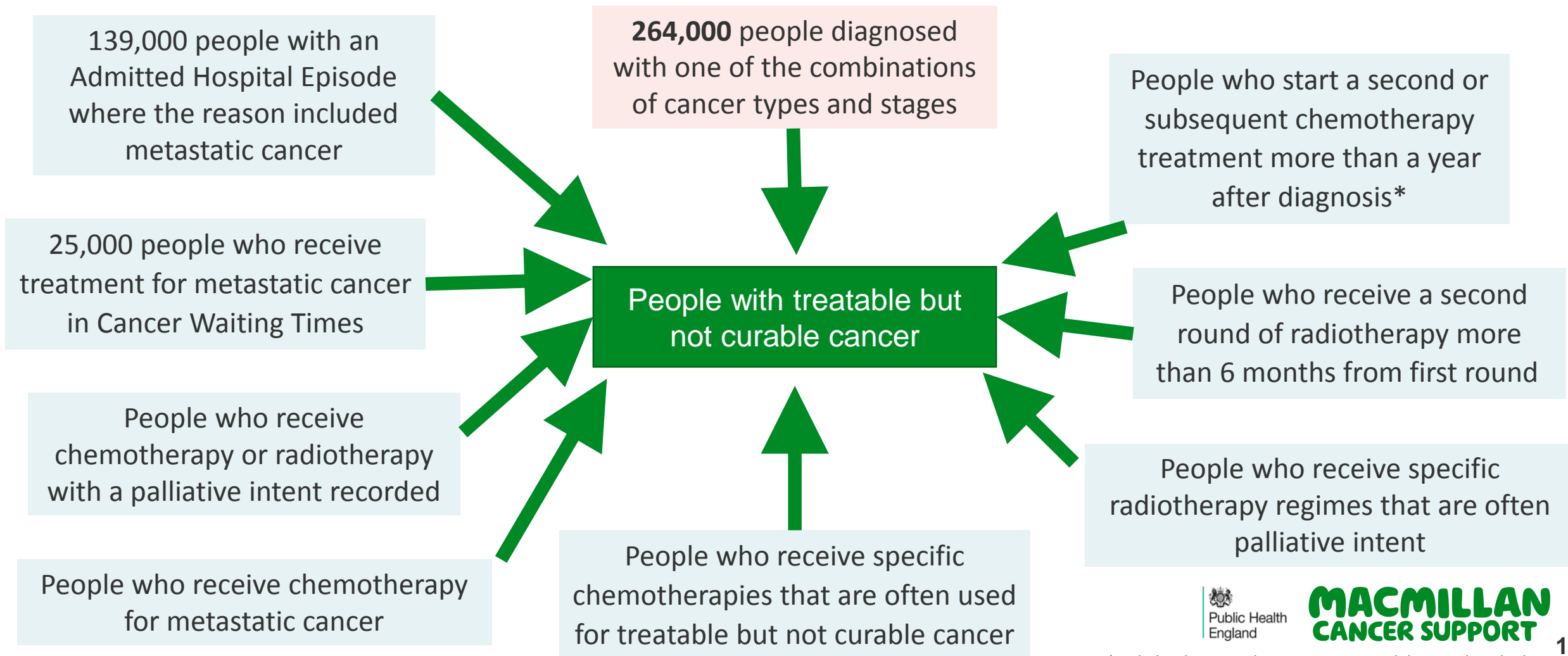
Sex and age group for those alive 31 Dec 2016



Year of diagnosis



# Adding criteria to also collate people who develop treatable but not curable cancer post diagnosis



# Conclusions

- We will further refine our methodology with the help of clinicians and through analyses to agree a single overarching criterion
- Ultimately this work will allow better categorisation of people with treatable but not curable cancer, and thus help decision makers and service designers to provide appropriate services for them.

# MACMILLAN CANCER SUPPORT



Public Health  
England

And thank you to:

My co-authors and collaborators Joanna Pethick, Archie Macnair, Gregory Fallica, Jennifer Than, Chloe Bright and Jane Maher

All the clinicians who attended our workshop and provided advice

This work uses data provided by patients and collected by the NHS as part of their care and support

**ANY QUESTIONS?**